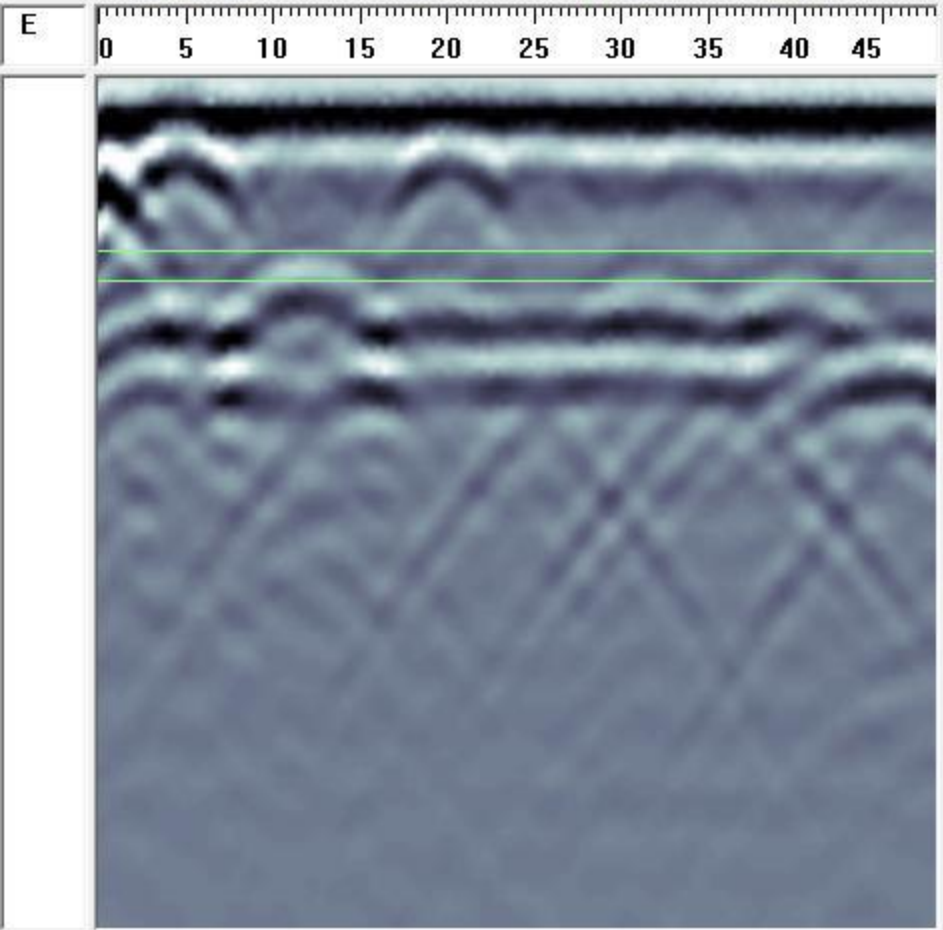
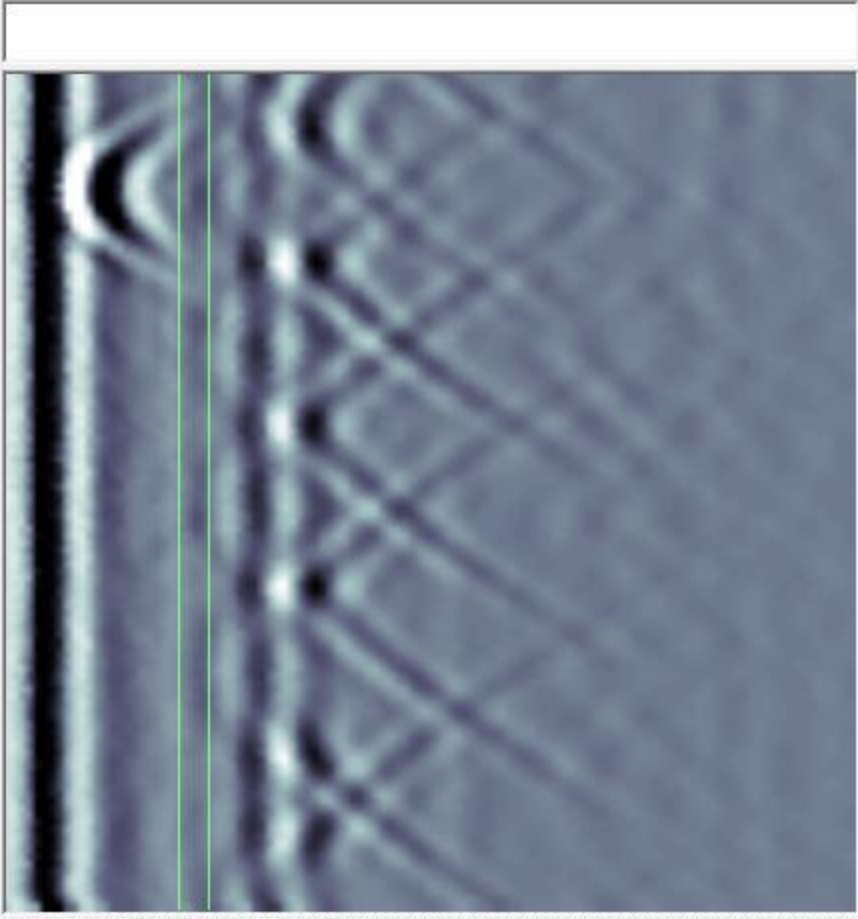
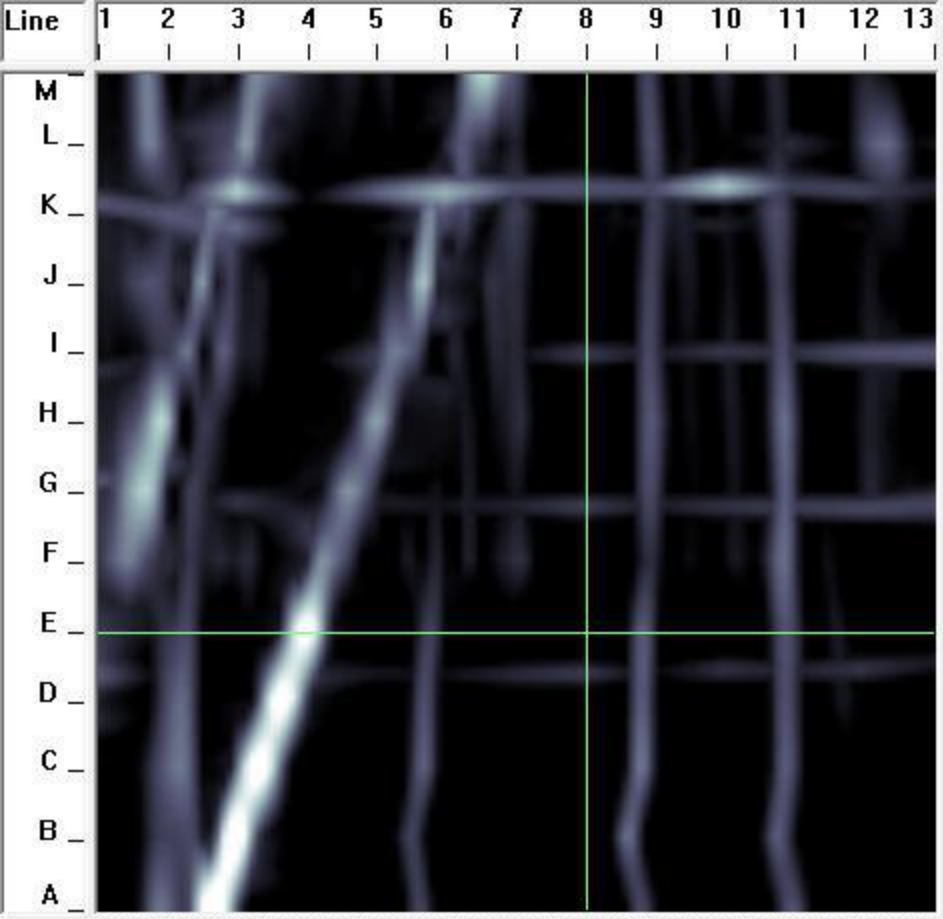


Slice Depth: 2.0-3.0 inch  
 Concrete Type: 123  
 Resolution: Normal  
 Collected: 2010-01-05  
 Analyzed: 2010-01-25  
  
 PCD Image: OFF      S:100 C:000  
 Depth Slice: Combo    **S:083 C:025**  
 Cross-Section:      S:100 C:000  
                                  Gain: 1  
 Path=\\Server02\USERS\Vance Rogers\Desktop\sample new\  
 1240 Spring Hill Dr\CONQ001\CONQ001

Slice showing top layer of rebar



A LIMITED LIABILITY COMPANY  
(410) 766-2210



Slice Depth: 6.0-7.0 inch  
 Concrete Type: 123  
 Resolution: Normal  
 Collected: 2010-01-05  
 Analyzed: 2010-01-25

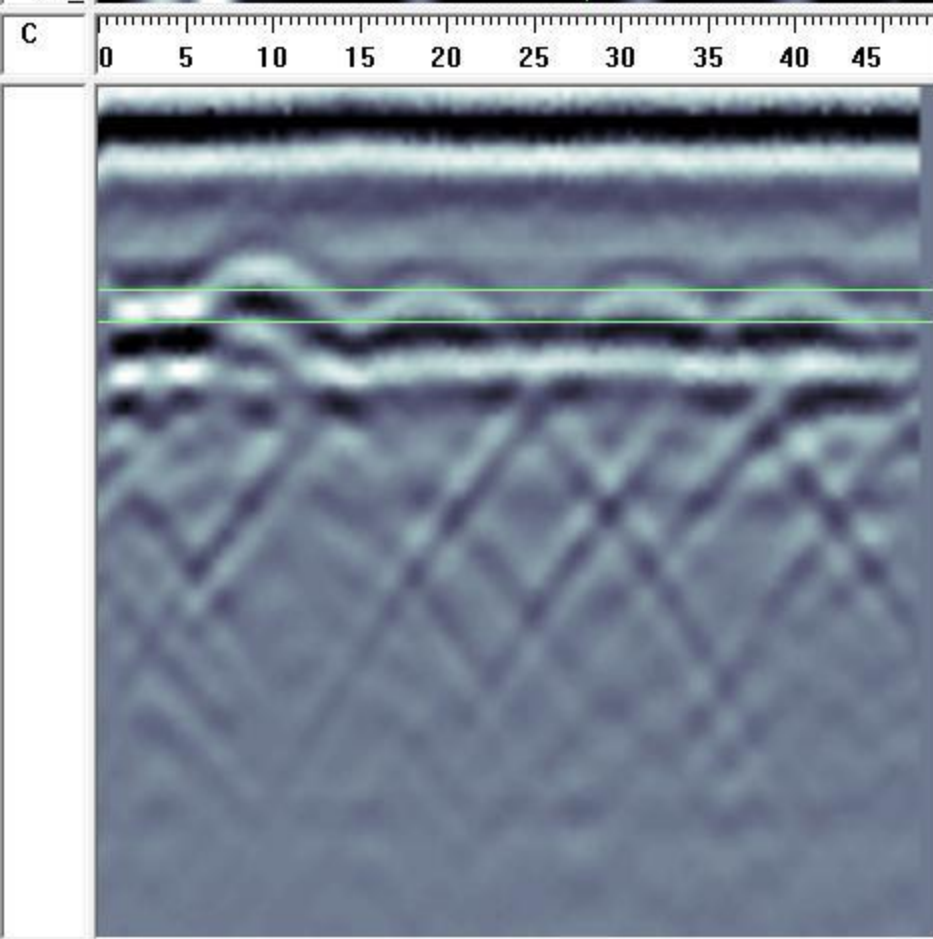
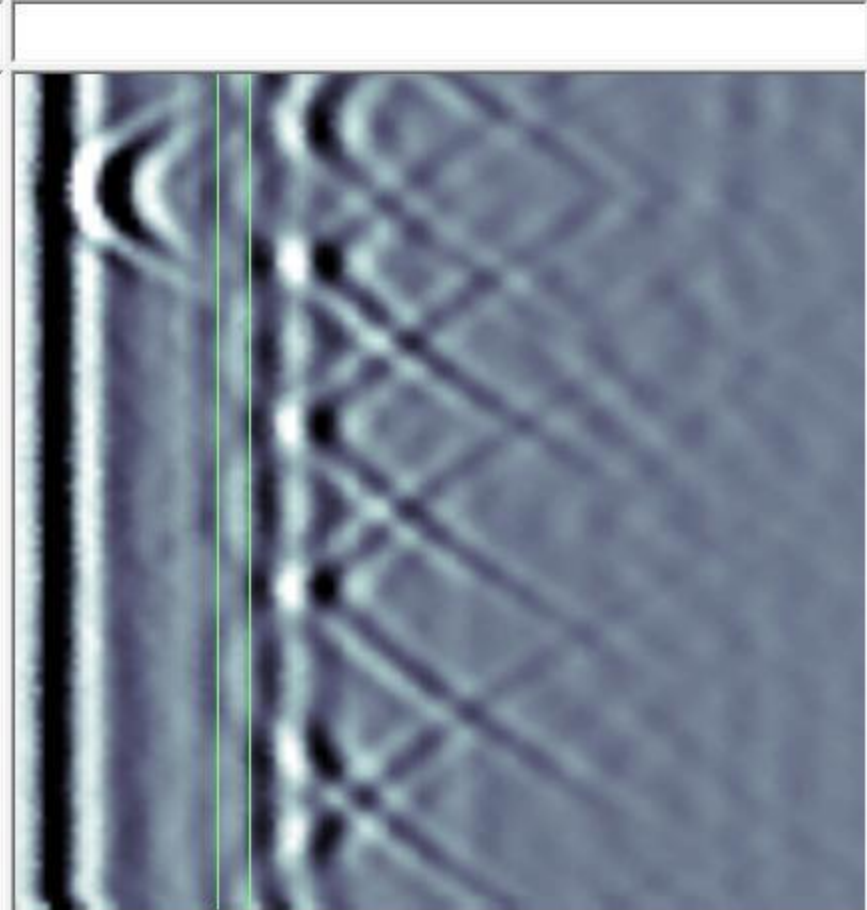
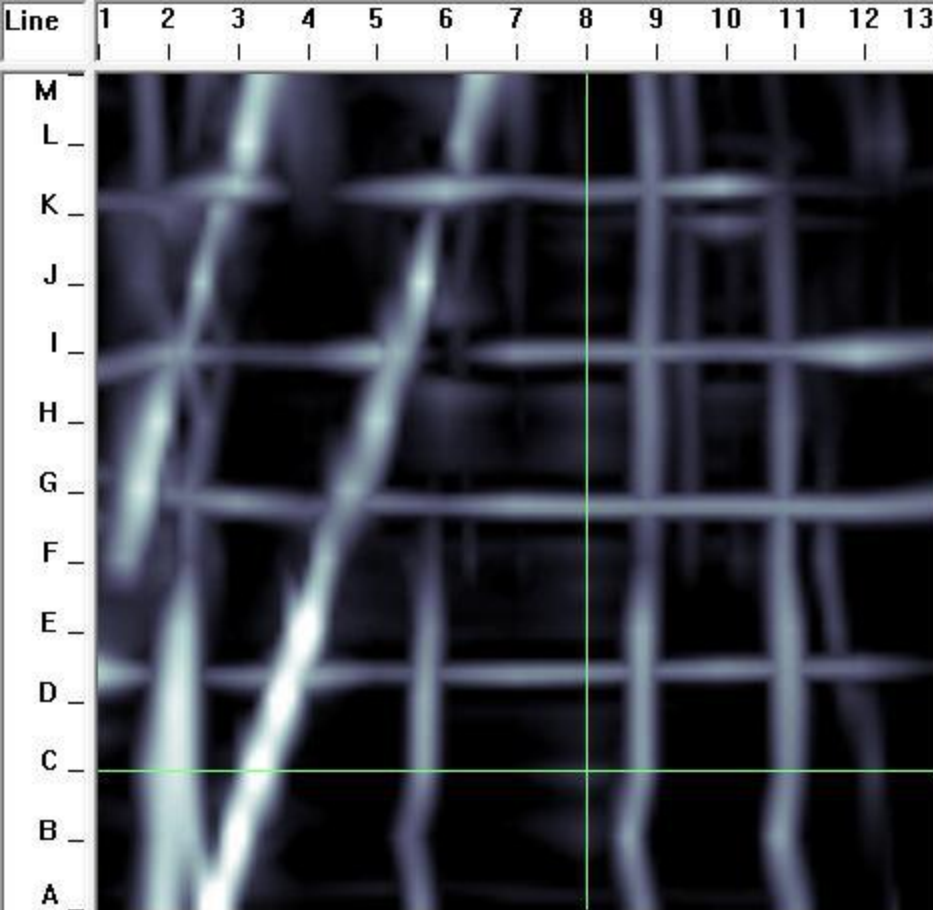
PCD Image: OFF    S:100 C:000  
 Depth Slice: Combo    **S:083 C:025**  
 Cross-Section:    S:100 C:000  
                                  Gain: 1

Path=\\Server02\USERS\Vance Rogers\Desktop\sample new\  
 1240 Spring Hill Dr\CONQ001\CONQ001

Slice showing 2 conduits



A LIMITED LIABILITY COMPANY  
 (410) 766-2210

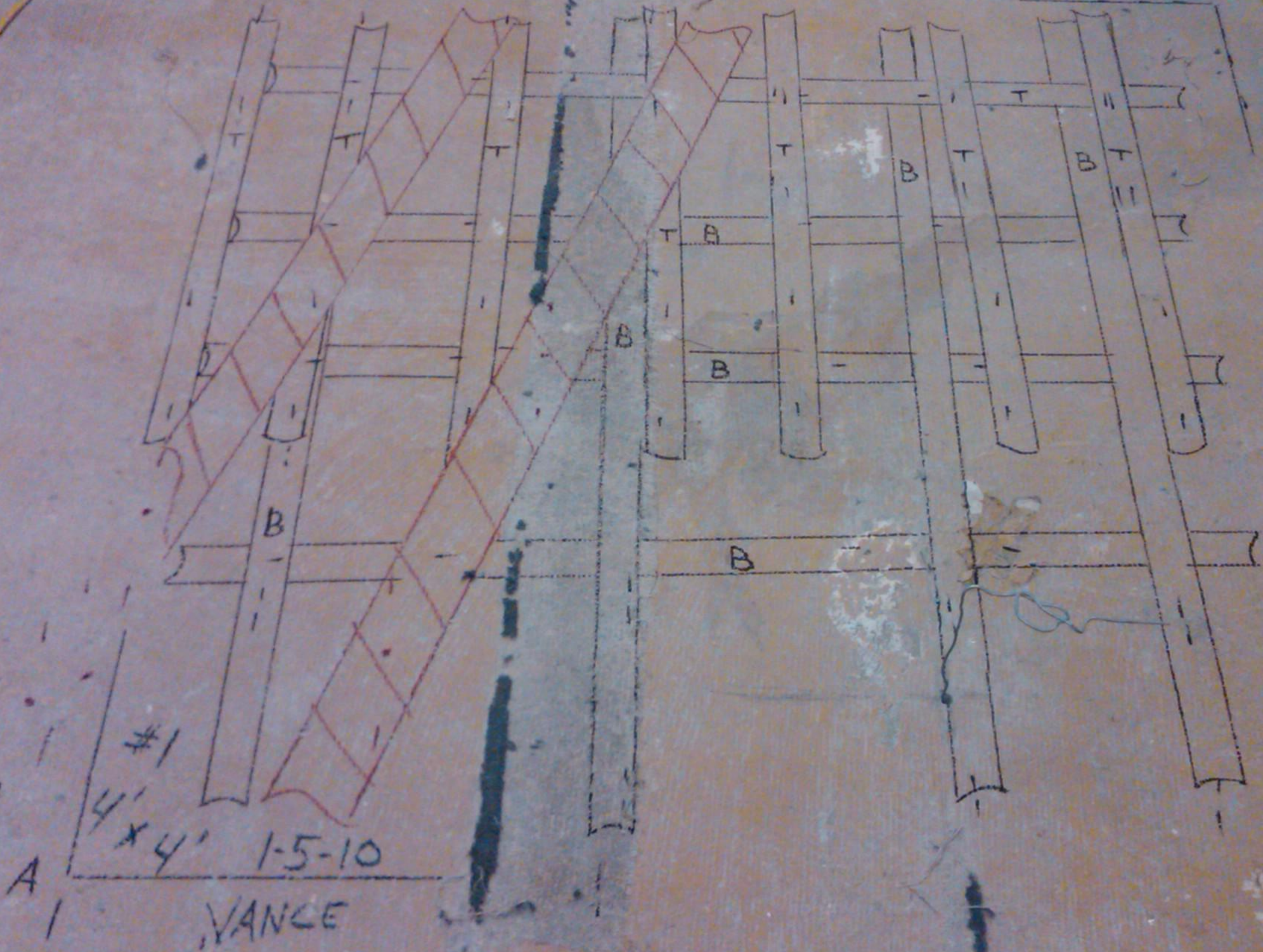


Slice Depth: 7.0-8.0 inch  
 Concrete Type: 123  
 Resolution: Normal  
 Collected: 2010-01-05  
 Analyzed: 2010-01-25  
  
 PCD Image: OFF      S:100 C:000  
 Depth Slice: Combo    **S:083 C:025**  
 Cross-Section:        S:100 C:000  
                                  Gain: 2  
 Path=\\Server02\USERS\Vance Rogers\Desktop\sample new\  
 1240 Spring Hill Dr\CONQ001\CONQ001

Slice showing bottom layer of rebar



A LIMITED LIABILITY COMPANY  
(410) 766-2210



A LIMITED LIABILITY COMPANY  
(410) 766-2210